

Contact list

Accredited bodies for certification for WaterMark and StandardsMark

Australian Gas Association Certification Services (Vic)

2 Park Way
Braeside Vic 3195
Tel 03 9580 4500
Fax 03 9580 5500
Web www.aga.asn.au/

BSI management Systems Australia and New Zealand Pty Ltd (NSW)

Suite 1.08, 56 Delhi Road
North Ryde NSW 2113
Tel 1300 730 134
Fax 1300 730 135
Web www.bsigroup.com.au

Global-Mark Pty Ltd (NSW)

Unit 25, 28 Barcoo Street
Roseville NSW 2069
Tel 02 9406 8555 / 1300 766 509
Fax 02 9406 8556 / 1300 766 504
Web www.Global-Mark.com.au

IAPMO R&T Oceana

249 Hawthorn Road
Caulfield North VIC 3161
Tel 03 9528 6899
Fax 03 9523 1891
Web www.iapmooceana.org

International Standards Certifications Pty Ltd (NSW)

Suite 2, 10 Gladstone Road
Castle Hill Sydney NSW 2154
Tel 02 9894 6242
Fax 02 9894 6808
Web www.isc-worldwide.com

SAI Global Certification Services Pty Ltd Trading as SAI Global (NSW)

286 Sussex Street
Sydney NSW 2000
Tel 02 8206 9670
Fax 02 8206 6037
Web www.sai-global.com

SGS Systems and Services Certification Pty Ltd (Vic)

480 Princes Highway
Noble Park Vic 3174
Tel 03 9790 8714
Fax 03 9790 8701
Web www.au.sgs.com

**Additional details on accreditation
bodies can be found on the JAS-ANZ
website: www.jas-anz.com.au**

Standards Australia

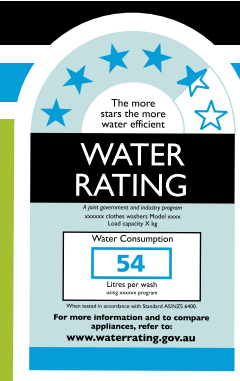
Order the WELS Standard through
the Standards Australia web store at:
[http://www.standards.org.au/cat.
asp?catid=4](http://www.standards.org.au/cat.asp?catid=4) or contact: SAI Global
Tel 02 8206 6405

For WELS registration support or further information

WELS applicants can download
instructions for registering products
online from the WELS database.

For more information go to the WELS
website at www.waterrating.gov.au
or email wels@environment.gov.au
or call **1800 803 772**.

August 2008



NATA-accredited** laboratories relevant to WELS product testing

Australian Consumers' Association (NSW)

57 Carrington Road
Marrickville NSW 2204
Tel 02 9577 3370
Facilities: conditionally available for public testing

Accreditation No. 1702

Australian National Testing Laboratory (Qld)

Unit 17, 15 Suscatand Street
Rocklea Qld 4106
Tel 07 3274 0737
Fax 07 3274 0712
Facilities: public testing service

Accreditation No. 15698

CSIRO Materials Science and Engineering (NSW)

Hydraulics Laboratory
14 Julius Avenue,
Riverside Corporate Park
North Ryde NSW 2113
Tel 02 9490 5496
Fax 02 9490 5537
Web www.cmit.csiro.au
Facilities: public testing service

Accreditation No. 165

Enertech Australia Pty Ltd (Vic)

15 Wadhurst Drive
Boronia Vic 3155
Tel 03 9800 3622
Fax 03 9800 4420
Facilities: public testing service

Accreditation No. 12065

Queensland Testing Laboratory Pty Ltd (Qld)

2 Enterprise Street
Caloundra Qld 4551
Tel 07 5499 6996
Fax 07 5499 6990
Facilities: public testing service

Accreditation No. 14783

SGS Australia Pty Ltd (Vic)

SGS Electrical and Electronic Testing Laboratory
73 Williams Road
Blackburn Vic 3130
Tel 03 9875 9023
Fax 03 9878 7077
Facilities: public testing service

Accreditation No. 3637

VIPAC Engineers and Scientists Ltd (Vic)

Victorian Laboratory
Victorian Technology Centre
275-283 Normanby Road
Port Melbourne Vic 3207
Tel 03 9647 9700
Fax 03 9646 4370
Facilities: public testing service

Accreditation No. 1506

Plumbing Testing Laboratory (WA)

11 Excellence Drive
Wangara WA 6065
Tel 08 9406 6412
Fax 08 9406 6446
Facilities: public testing service

Accreditation No. 14285

****Note** not all NATA (National Association of Testing Authorities) laboratories can do all WELS testing. Laboratories listed on this page are currently able to test for WELS Standards. For full details of each laboratory's capabilities visit the NATA website at www.nata.asn.au

